

2.7 MARI

Stainless cylindrical coupling nut*



Properties

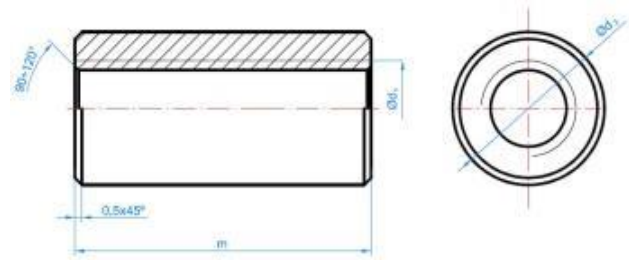


Stainless steel A2

Sizes

DRAWING

CODE		MARI0830	MARI1030
d∅: thread	[mm]	M8	M10
m: total length	[mm]	30	30
∅d2: outside diameter	[mm]	11	13
Threaded rod		975A2M10	975A2M10



2.8 PCU

Angular iron strap



Properties



Steel

Zin Plated coating

Sizes

DRAWING

CODE		PCU0005	PCU0006
d∅: thread	[mm]	M8	M10
Threaded rod		975ZM06	975ZM10

