

## 2.12 TU-GU

### Channel nut



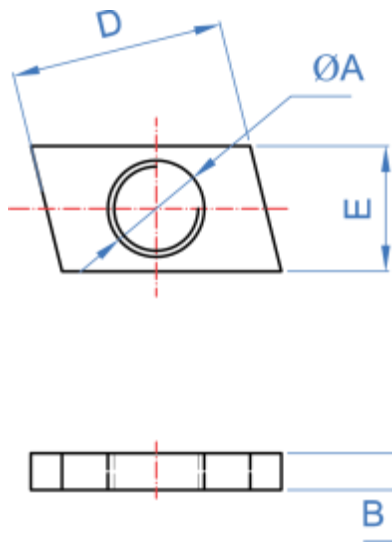
Material	Coating	Valid for
Steel	Zinc-plated	Slotted channel GP-G

### Installation data

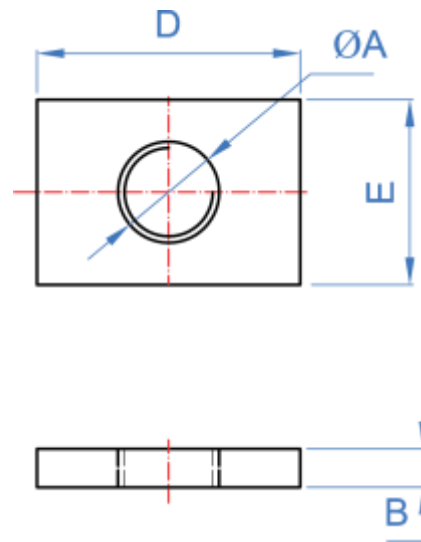
Code	ØA	B	D	E	Valid for
TUG201006	M6	4	23	13	20/10 - 25/08 - 25/11 - 27/18 - 28/30
TUG201008	M8	4	23	13	20/10 - 25/08 - 25/11 - 27/18 - 28/30
TUG271808	M8	4	30	24	27/18 - 28/30 - 38/40 - 40/20
TUG271810	M10	4	30	24	27/18 - 28/30 - 38/40 - 40/20

### Drawing

TUG2010XX



TUG2718XX



### Maximum recommended sliding and tension loads

Code	Channel	Installation torque [Nm]	Sliding load [kN]	Tension load [kN]
TUG271808	GPI283015	14.9	0.69	5.33
TUG271808	GPI384020	14.9	0.74	5.84
TUG271810	GPI283015	25.8	0.66	5.84
TUG271810	GPI384020	25.8	1.20	6.19